

WRITING TIME

Adventures in handwriting

■ practice book ■

Queensland Modern Cursive



The Sun

We all need energy to carry out our daily activities. Our energy comes from the food we eat. The sun is the largest source of the Earth's energy.



Exits to Pointed Entries: Trace and copy these joins and words relating to the sun. Remember, the exit extends to a pointed entry while your pencil remains on the page.

a i - a i - a i

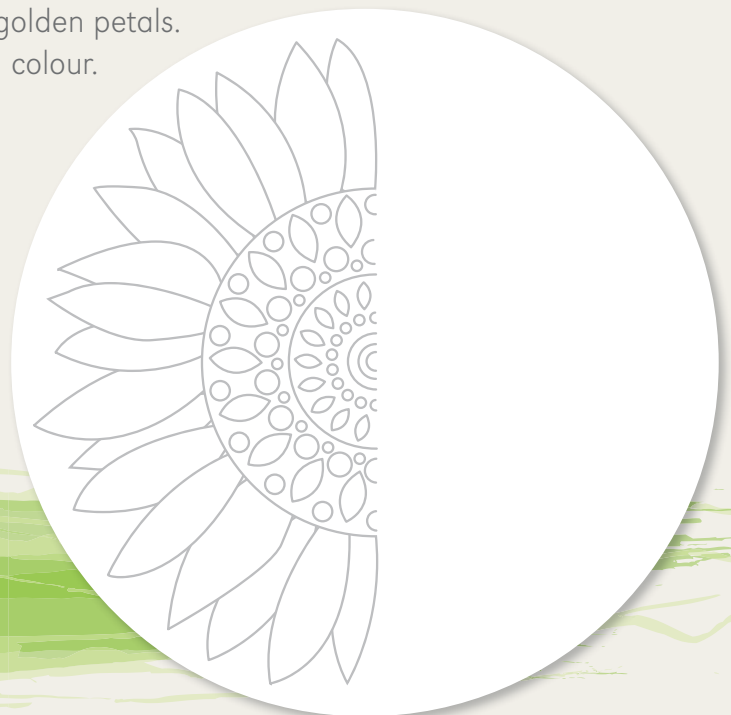
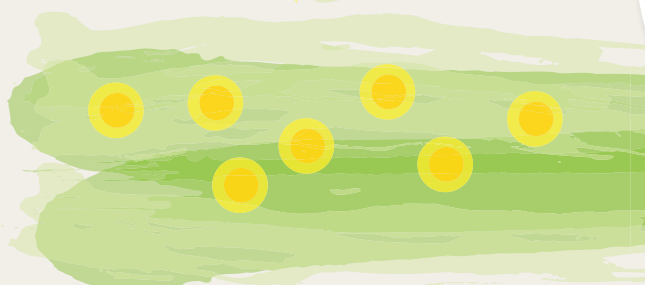
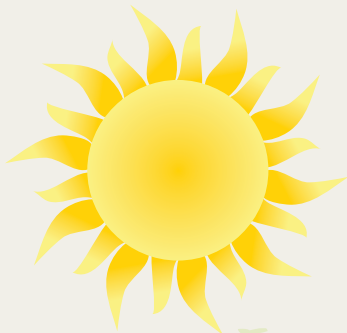
ai ap au ay ci cu di du dw

ep ey hi hu ip iv ki li lu

ly mi nu ti tu tw ty up

sunlight shine radiation eclipse distant

Fine Motor Skills: Sunflowers have vibrant, golden petals. Complete the other half of the sunflower, then colour.



Print to Cursive: Rewrite this paragraph in cursive about the sun's energy. Focus on your joins.

The sun is an amazingly powerful source of energy. In fact, the amount of sunlight the Earth receives in just one hour could supply all the countries on Earth with their energy needs for a whole year!

Fine Motor Skills: Trace and colour the sun and solar flares. Use red, orange and yellow.

Solar flares are tremendous eruptions on the surface of the sun.



Printing: Unscramble these letters to find words relating to the sun and energy. Copy each word in print, cursive and capitals.

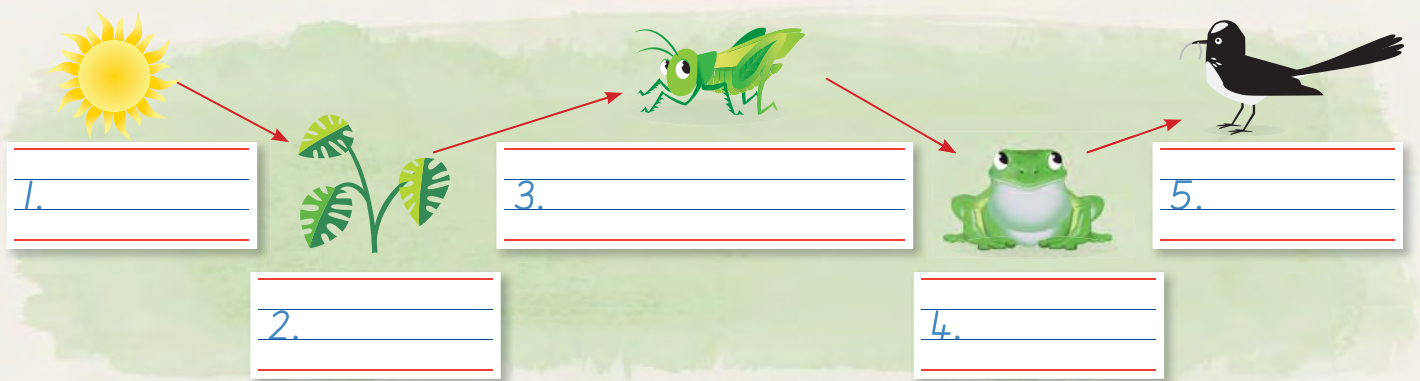
Letters	Print	Cursive	Capitals
alsor	s		
rvocnet	c		
geenry	e		
ynsun	s		
stulnigh	s		
rrnsaftt	t		
woerp	p		
nubrt	b		

Copy the meaning beside each word.

- | | | |
|--------------------|---|------------------------------|
| 1. our star | 4. resources that do not run out | 6. an energy supply |
| 2. change or alter | 5. the capacity to do work or transfer heat | 7. a measure of hot or cold. |
| 3. of the sun | | |

Word	Meaning
energy	
solar	
convert	
renewable	
resource	
temperature	
sun	

Labelling: Label this diagram of an energy chain.



Complete this passage using the words from the energy chain diagram.

Plants absorb solar energy from the _____.

Plants convert solar energy to chemical energy. The _____ is eaten by the _____ which is eaten by the _____.

The frog is then eaten by the _____.

Energy is transferred from the _____ to the _____, to the _____, to the _____ and then to the _____.

Trace and copy these exits to rounded entries.

am cr dr em ix kn lm mm uz

solar power energy thermal transfer

Reflection

Draw a star beside your best line of handwriting on this page.

Picture Mix-up

Lucy's documents have become mixed up. Help her put the image together using the numbers as a guide, then colour. Do you know what animal it is?

Answer: _____



9	14	5	10	
				12
4	3	7	1	11
15	2	8	13	6
1	2	3	4	5
6	7	8	9	10
11	12	13	14	15